

MONTHLY MEMBERSHIP PROGRESS REPORT

LOCATION NEW YORK

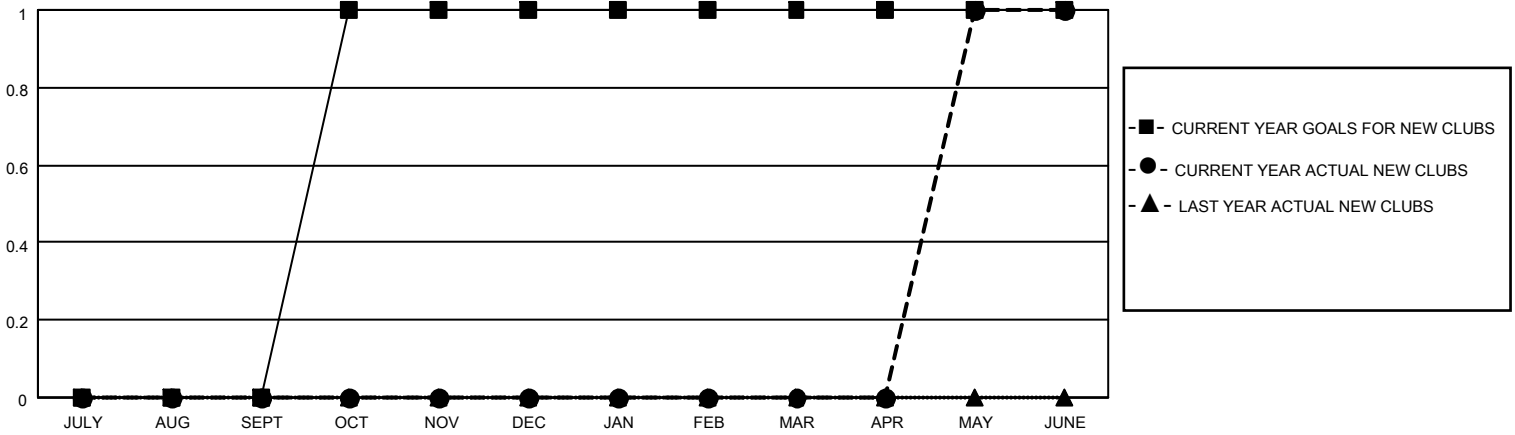
District 20 R1

Results as of: 6/30/2023

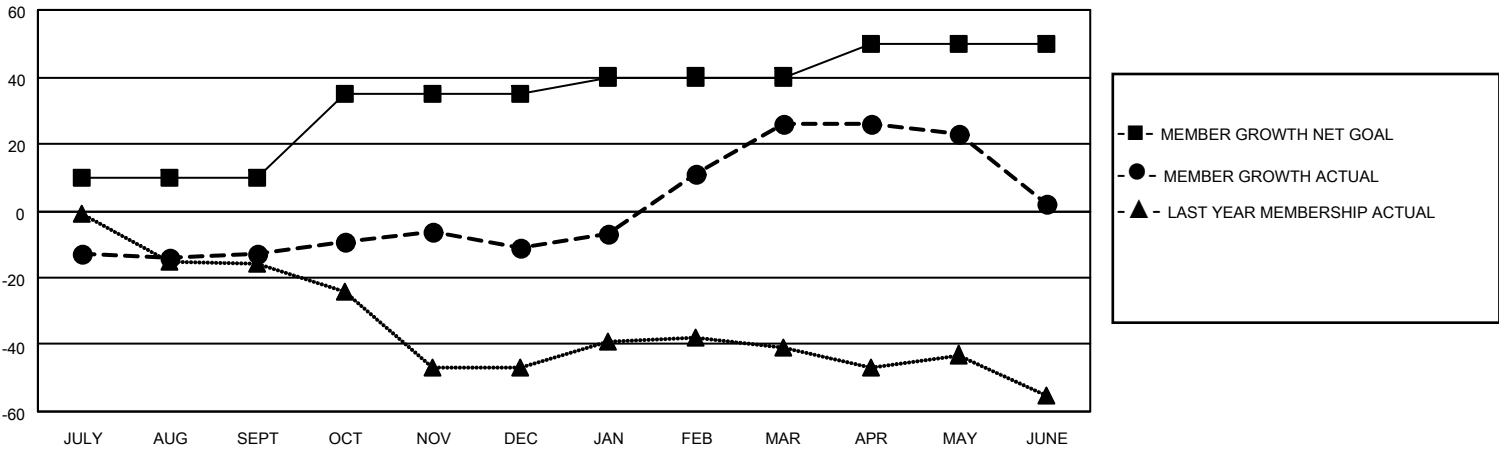
Clubs			
RESULTS FOR 2022-2023			
QUARTER	NEW CLUB GOAL	NEW CLUBS	DROPPED CLUBS
JULY/AUG/SEPT	0	0	0
OCT/NOV/DEC	1	0	0
JAN/FEB/MAR	0	0	0
APR/MAY/JUNE	0	1	0

Members			
RESULTS FOR 2022-2023			
QUARTER	MEMBER GROWTH NET GOAL	MEMBER GROWTH ACTUAL	DROPPED MEMBERS ACTUAL (including transfers)
JULY/AUG/SEPT	10	6	17
OCT/NOV/DEC	25	11	8
JAN/FEB/MAR	5	53	13
APR/MAY/JUNE	10	41	65

GOALS AND ACTUAL NEW CLUBS CUMULATIVE



GOALS AND ACTUAL MEMBERS CUMULATIVE



DROPPED CLUBS: 0

19 CLUBS OF 29 ADDED 1 OR MORE NEW MEMBERS

GENDER DISTRIBUTION

MALE	404 (57.55%)
FEMALE	298 (42.45%)
NON BINARY	0 (0.00%)
PREFER NOT TO ANSWER	0 (0.00%)

DROPPED MEMBERS

[CLICK HERE FOR CUMULATIVE MEMBERSHIP DATA](#)

DECEASED	7
CLUB CANCELLED	0
OTHER	96
TOTAL	103

TOTAL FAMILY UNIT MEMBERS 123

FAMILY MEMBERS PAYING HALF DUES 64